



36C84-912

36C CYCLE PILOT GAS VALVES

Ideal general purpose replacements for Cycle-Pilot Intermittent Ignition (IID) systems.

FEATURES

- Straight through design
- Mounting position upright, or 0° to 90° from upright in any direction
- Inlet/outlet reducer bushings

SPECIFICATIONS

Electrical Rating 0.6 amps
 Maximum Pressure Rating 1/2 PSI (14.0" W.C.)
 Ambient Operating Range -40 to 175°F (-40 to 79°C)
 UR/CUR File Number MP1323
 CSA/CUS Certificate Number 1113449

PIPE SIZE	1" PRESSURE DROP CAPACITY		RANGE OF REGULATION	
	BTU/HR		BTU/HR	
	1" PRESSURE DROP CAPACITY NATURAL GAS .64 SP. GR. (1000 BTU/FT ³)	1" PRESSURE DROP CAPACITY LP GAS 1.53 SP. GR. (2500 BTU/FT ³)	RANGE OF REGULATION NATURAL GAS .64 SP. GR. (1000 BTU/FT ³)	RANGE OF REGULATION LP GAS 1.53 SP. GR. (2500 BTU/FT ³)
1/2" X 3/8"	100,000	162,000	15,000-100,000	15,000-162,000
1/2" X 1/2"	230,000	372,600	30,000-290,000	30,000-469,000
1/2" X 3/4"	230,000	372,600	30,000-290,000	30,000-469,000
3/4" X 3/4"	280,000	453,600	50,000-400,000	50,000-648,000

36C SERIES CYCLE PILOT

VOLTAGE	STAGES / OPENING	PIPE SIZE	REGULATOR SETTING	NATURAL GAS ADJ. RANGE (WC)	LP GAS ADJ. RANGE (WC)	LP KIT INCL	REDUCER BUSHING KIT	FLOW DIRECTION	SIDE TAPS	INLET / OUTLET PRESSURE TAP	INTERMITTENT / PROVEN PILOT	INTERNAL WIRING SEE FIGURE	MODEL NUMBER	ITEM NUMBER
24 VAC 60 Hz	1 - Stage Fast Opening	3/4" x 3/4"	3.5"	2.5"-5.0"	7.5"-12.0"	Yes	Yes	Str. Thru	No	Yes / Yes	Cycle Pilot	7	36C84-912	36C84 912
24 VAC 60 Hz	1 - Stage Fast Opening	3/4" x 3/4"	3.5"	2.5"-5.0"	7.5"-12.0"	Yes	Yes	Str. Thru	No	Yes / Yes	Cycle Pilot	7	36C84-921	36C84 921
24 VAC 60 Hz	1 - Stage Fast Opening	3/4" x 3/4"	3.5"	2.5"-5.0"	Nat. Only	No	No	Str. Thru	No	Yes / Yes	Cycle Pilot	14	36C84-923	36C84 923
24 VAC 60 Hz	1 - Stage Fast Opening	3/4" x 3/4"	3.5"	2.5"-5.0"	Nat. Only	No	Yes	Str. Thru	No	No / No	Cycle Pilot	4	36C84-926	36C84 926
24 VAC 60 Hz	1 - Stage Fast Opening	3/4" x 3/4"	3.5"	2.5"-5.0"	7.5"-12.0"	Yes	Yes	Str. Thru	No	Yes / Yes	Cycle Pilot	8	36C84-945	36C84 945
24 VAC 60 Hz	1 - Stage Fast Opening	3/4" x 3/4"	3.5"	2.5"-5.0"	Nat. Only	No	Yes	Str. Thru	No	Yes / Yes	Cycle Pilot	7	36C94-906	36C94 906

NOTE: Not for Standing Pilot / HSI / DSI.

NOTE: -9XX series replaces -4XX series. Knob replaced with an ON-OFF switch.

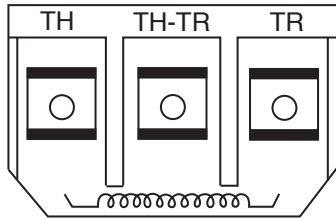
See White-Rodgers General information for capacities of other gases.

PARTS AND ACCESSORIES

IMAGE	DESCRIPTION	MODEL NUMBER	ITEM NUMBER
	Bracket for Bryant pilots when retrofitting with Cycle-Pilot®.	F6-1794	F0006 179400B1
	LP to Natural Gas Conversion Kit for Use On Single Stage 36C, D, E, F, G, H, J Valves, Regulation Range 2.5" to 5.0"W.C.	F92-0656	F0092 065600S1
	Natural to Regulated LP Gas Conversion Kit for Use On Single Stage 36C, D, E, F, G, H, J Valves. Regulation Range 7.0" to 12.0"W.C.	F92-0659	F0092 065900S1

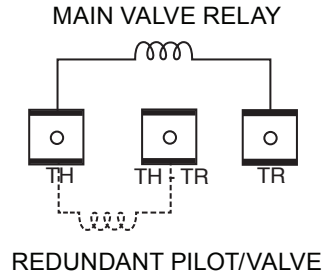
IMAGE	DESCRIPTION	MODEL NUMBER	ITEM NUMBER
	Natural to Unregulated LP Gas Conversion Kit for All 36C00 Valves. Use With External Regulator Set for LP Gas	F92-0737	F0092 073700S1
	Gas valve pilot fitting 1/4" brass compression fitting for pilot line connections.	F69-0727	F0069 072700S1
	36" replacement harness assembly for connection of 5059-23 to 36C84-426 in the 21D18-3 Cycle-Pilot® retrofit kit.	F115-0064	F0115 006400S1
	36" replacement harness assembly for connection of 5059-23 to 36E86-302 in the 21D18-14 Cycle-Pilot® retrofit kit.	F115-0087	F0115 008700

3 TERMINAL PANEL



Some models have screw terminals instead of spade terminals shown

FIG. 1



Some models may not have redundant valve

MILLIVOLT 3 TERMINAL PANEL

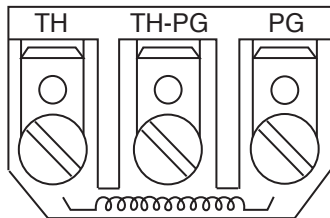
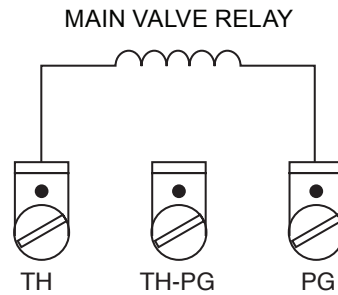


FIG. 2



SNAP OPEN

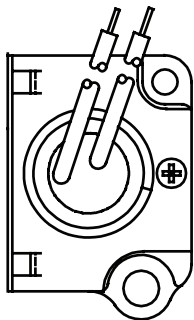


FIG. 3



CYCLE PILOT

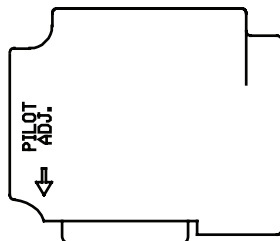
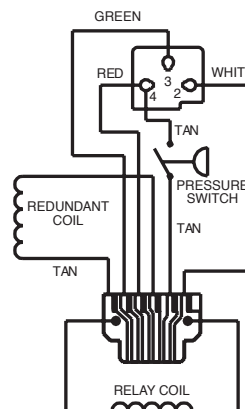


FIG. 4



4 TERMINAL PANEL

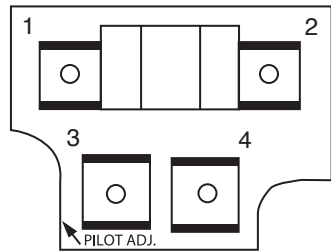
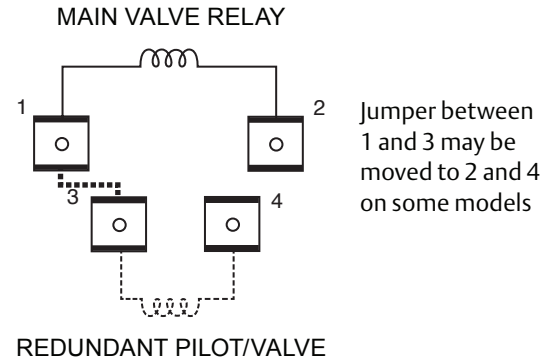


FIG. 5



BI-METAL TWO STAGE

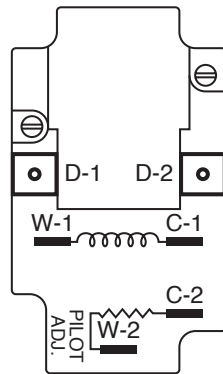
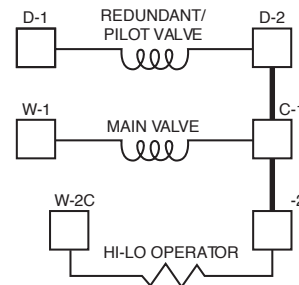
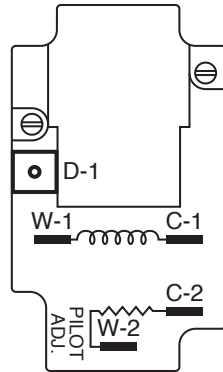


FIG. 6A

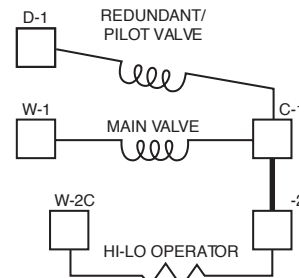


BI-METAL TWO STAGE



On some models, W1 and W2 are designated GV1 and GV2

FIG. 6B



CYCLE PILOT PLUG-IN

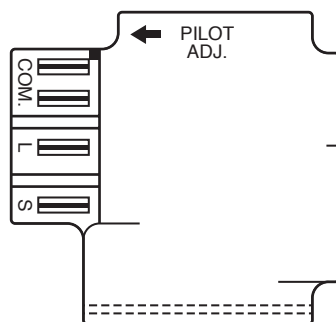
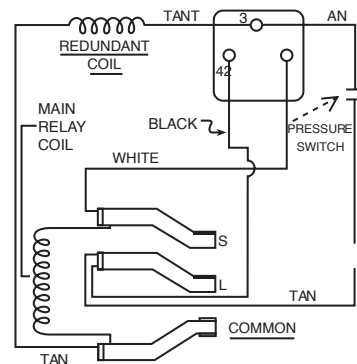
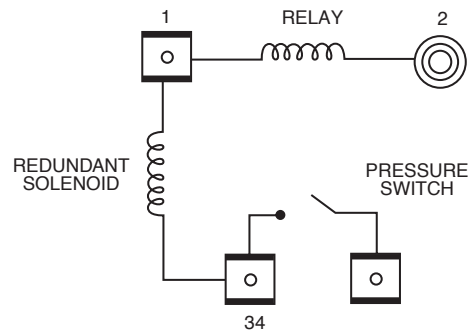
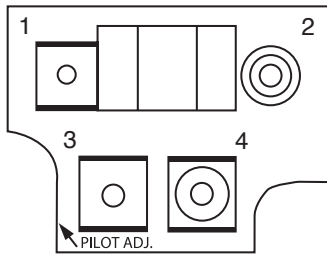


FIG. 7



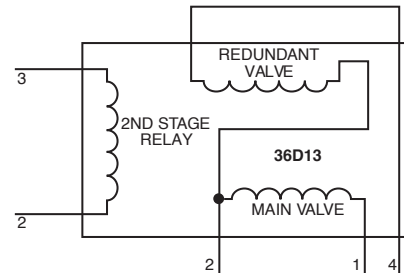
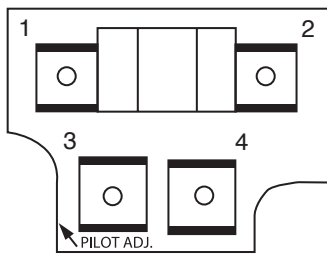
CYCLE PILOT WITH 4 TERMINAL PANEL

FIG. 8



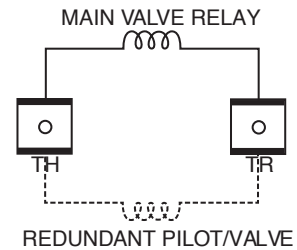
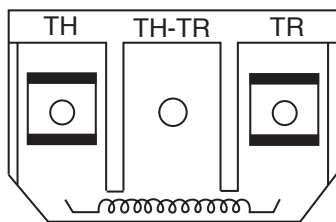
RELAY TWO STAGE

FIG. 9



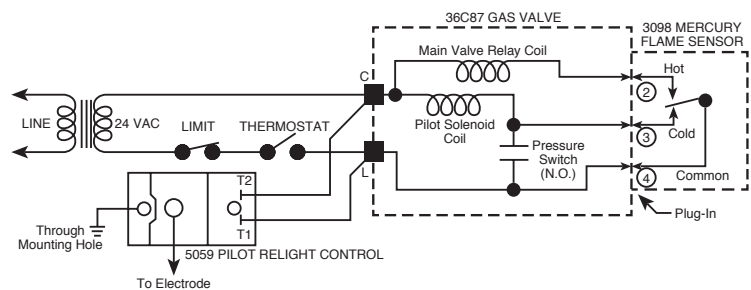
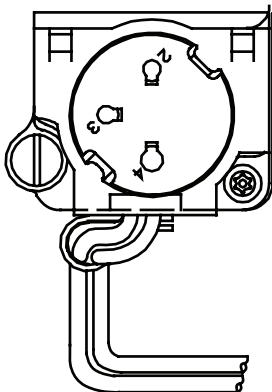
2 TERMINAL PANEL

FIG. 10



CYCLE PILOT

FIG. 11



CYCLE PILOT

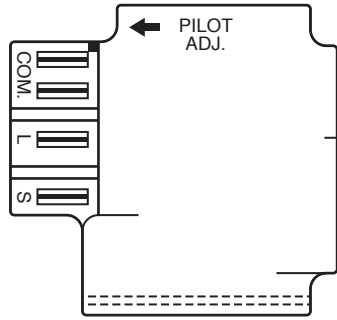
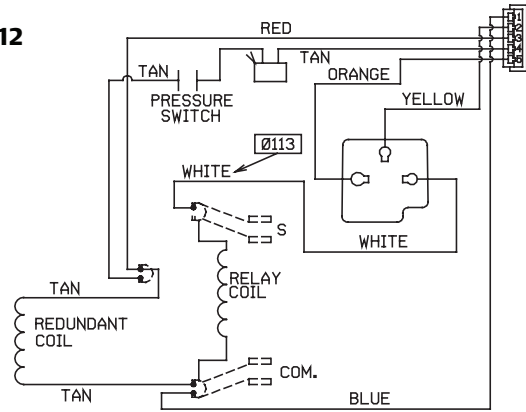


FIG. 12



CYCLE PILOT

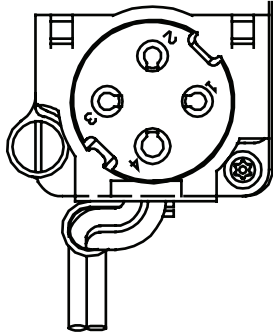
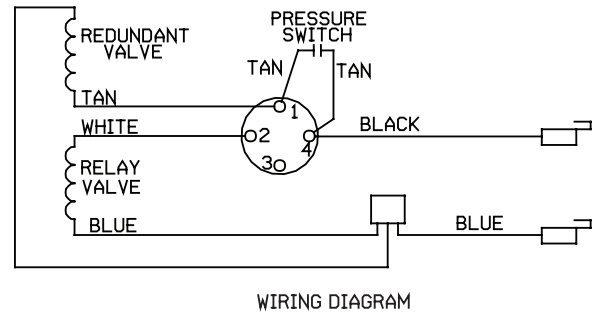


FIG. 13



CYCLE PILOT

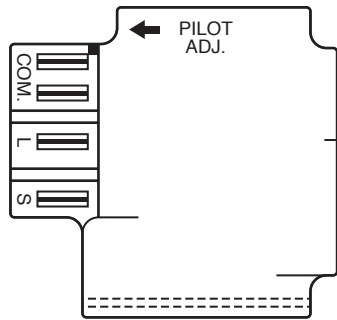
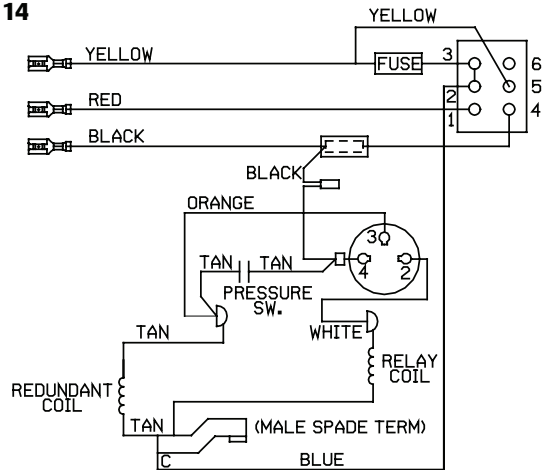


FIG. 14



INTERMITTENT IGNITION

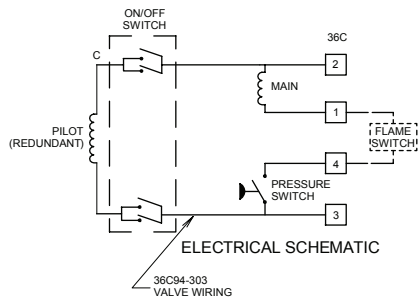


FIG. 15

